

# OXFORD GARDEN

## EILAND Armchair

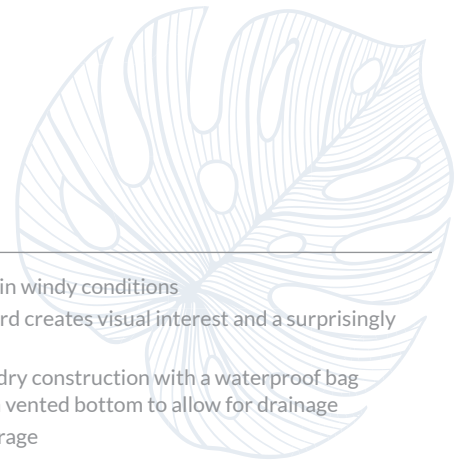
EDCHT112

### FEATURES

- Lightweight yet sturdy, even in windy conditions
- Open weave of composite cord creates visual interest and a surprisingly comfortable seat
- Optional seat pad has quick-dry construction with a waterproof bag encasing the foam core and a vented bottom to allow for drainage
- Stackable for convenient storage
- Leg endcaps provide protection from marring and scratching of surfaces
- Available only in packs of TWO or FOUR

### MATERIALS

Powder coated aluminum is durable and lightweight. The rustproof nature of the frame offers high quality and strength. Composite cord is PVC coated polyester thread woven into a cord. Like our composite sling, it is a material ideally suited to the outdoor environment. Solution-dyed olefin fabric is an economical option available on stocking cushions that combines durability with affordability.



Seat Height	Assemb. Width	Assemb. Depth	Assemb. Height	Assemb. Weight Lbs.	Chair Pad Details
17.75"	23.25"	24"	33.5"	8	1EDCHPR* back ties
Carton # of Boxes	Carton Width	Carton Depth	Carton Height	Carton Weight Lbs.	
1	25"	24"	39"	① 18 ② 34	

① ② Indicates weight for packs of ONE or TWO.

### CONSTRUCTION

Welded aluminum

### HARDWARE

N/A

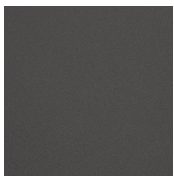
### SHIPPING

Ships via small parcel

### ASSEMBLY

N/A

### FRAME

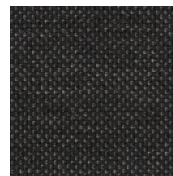


CARBON POWDER COATED ALUMINUM C



MOCHA COMPOSITE CORD T112

### STOCKING CHAIR PAD FABRIC



PEPPER SOLUTION-DYED OLEFIN PR



\*Chair pad is optional, sold separately, and available in the stocking material shown above (shown in Pepper).

Chair pad is also available as Made To Order (MTO) with Customer's Own Material (COM) with a minimum of two cushions, or with any Sunbrella® Special Order Fabric (SOF) with no minimum order. Pricing and lead times will vary; please call for more information.

Chair pad features quick-dry construction with vented bottom for drainage. Stocking chair pad in Olefin will be constructed with reticulated foam and ties in the back. Made To Order chair pad will be constructed with a waterproof bag encasing the foam with hook and loop tabs on the bottom.