

TRAVIRA Chat Chair SLING



MATERIALS

Powder coated aluminum is durable and lightweight. The rust proof nature of the frame offers high quality and strength. Teak has beautiful dense grain and high oil content allowing it to resist rot, moisture, warping and splintering. Tekwood is a wood-alternative developed from polystyrene. Tekwood provides the look of wood without the weathering process or maintenance. Composite Sling is made with Textilene®, a composite mesh fabric woven using PVC coated polyester.

ASSEMB. WIDTH	ASSEMB. DEPTH	ASSEMB. HEIGHT	ASSEMB. WEIGHT lbs	SEAT HEIGHT
26.5"	30.5"	32"	10	15"
CARTON # of BOXES	CARTON* WIDTH	CARTON* DEPTH	CARTON* HEIGHT	CARTON* WEIGHT lbs
①	29"	36"	39"	45

SHIPPING

Ships via LTL
Fully assembled

ASSEMBLY

No assembly required

CONSTRUCTION

Welded Aluminum

HARDWARE

Stainless Steel

Available in a qty. of TWO or FOUR only. *Shipping weight and dimensions are based on the largest case pack available.

MATERIAL options

Armcaps Also Available in Teak

SEAT/BACK & ARMCAPS



Black Sling TVCASBV
Tekwood Vintage Armcaps



Black Sling TVCASBN
Tekwood Natural Armcaps



Natural Sling TVCASCV
Tekwood Vintage Armcaps



Natural Sling TVCASCN
Tekwood Natural Armcaps

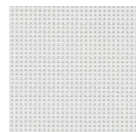
COLOR options

LEAD TIME

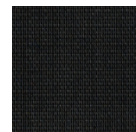
IN-STOCK 72 hrs

MINIMUM ORDER

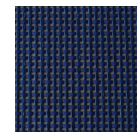
2



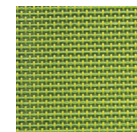
White



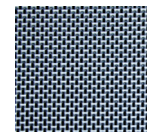
Black



Ink Pen



Go Green



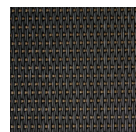
Titanium

LEAD TIME

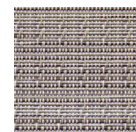
6-8 Weeks

MINIMUM ORDER

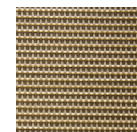
24 chairs



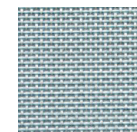
Ninja



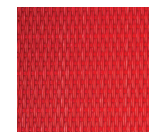
Bellows



Cocoa



Slate



Red