

TRAVIRA Stacking Armchair SLING



MATERIALS

Powder coated aluminum is durable and lightweight. The rust proof nature of the frame offers high quality and strength. Teak has beautiful dense grain and high oil content allowing it to resist rot, moisture, warping and splintering. Tekwood is a wood-alternative developed from polystyrene. Tekwood provides the look of wood without the weathering process or maintenance. Composite Sling is made with Textilene®, a composite mesh fabric woven using PVC coated polyester.

ASSEMB. WIDTH	ASSEMB. DEPTH	ASSEMB. HEIGHT	ASSEMB. WEIGHT lbs	SEAT HEIGHT
22"	21.5"	33.5"	14	17"
CARTON # of BOXES	CARTON* WIDTH	CARTON* DEPTH	CARTON* HEIGHT	CARTON* WEIGHT lbs
①	24"	32"	46"	66

SHIPPING

Ships via LTL
Fully assembled

ASSEMBLY

No assembly required

CONSTRUCTION

Welded Aluminum

HARDWARE

Stainless Steel

Available in a qty. of TWO or FOUR only. *Shipping weight and dimensions are based on the largest case pack available.

MATERIAL options

Armchairs Also Available in Teak

SEAT/BACK & ARMCAPS



Black Sling TVCHSBV
Tekwood Vintage Armchairs



Black Sling TVCHSBN
Tekwood Natural Armchairs



Natural Sling TVCHSCV
Tekwood Vintage Armchairs



Natural Sling TVCHSCN
Tekwood Natural Armchairs

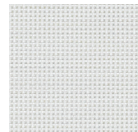
COLOR options

LEAD TIME

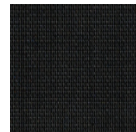
IN-STOCK 72 hrs

MINIMUM ORDER

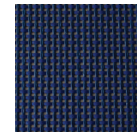
2



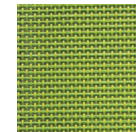
White



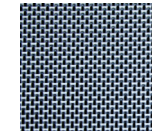
Black



Ink Pen



Go Green



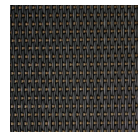
Titanium

LEAD TIME

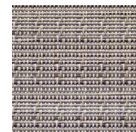
6-8 Weeks

MINIMUM ORDER

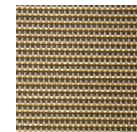
24 chairs



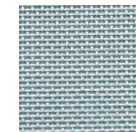
Ninja



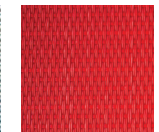
Bellows



Cocoa



Slate



Red