

## 40 SERIES DFI664XXL



## FEATURES

Accepts custom panel and handle

---

Premium height-adjustable upper rack and premium lower rack

---

Top tray with Instant Lift™

---

Heavy-duty stainless steel construction

---

Nylon-coated steel racks

---

Turbo Drying™ system

---

16 place-setting capacity

---

Quiet operation—42 dB(A)

---

9Spray™ wash system

---

Hidden controls

---

LED lit interior

---

LED display

---

Delayed start

## ACCESSORIES

Stainless steel front panel with tubular or pro handle

---

Stainless steel tubular or pro handle

Accessories available through an authorized Asko dealer. For local dealer information, visit the where to buy section of our website, askona.com.



## PROGRAMS

- Normal Wash
- Eco Wash
- Sanitation Wash
- Time Program
- Plastic Wash
- Hygiene Wash
- Crystal Glass
- Lower Half Wash
- Upper Half Wash
- Self-Cleaning
- Rinse and Hold

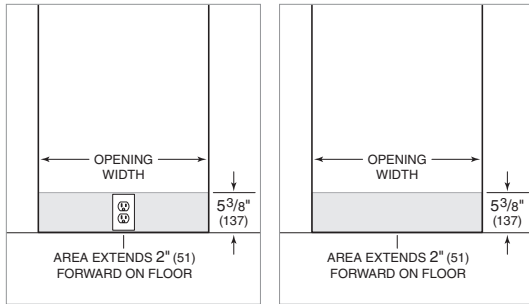
**PRODUCT SPECIFICATIONS**

Model	DFI664XXL
Width	23 <sup>5</sup> / <sub>8</sub> "
Height	34" – 35 <sup>3</sup> / <sub>4</sub> "
Depth	22"
Door Clearance	24 <sup>5</sup> / <sub>8</sub> "
Weight	115 lb
Electrical Supply	115 VAC, 60 Hz
Service	15 amp dedicated circuit
Receptacle	3-prong grounding-type
Power Cord	4'
Water Connection	6" PEX tubing with 3/8" NPT female connection
Drain Connection	5' corrugated tubing
Pressure	4.2–140 psi

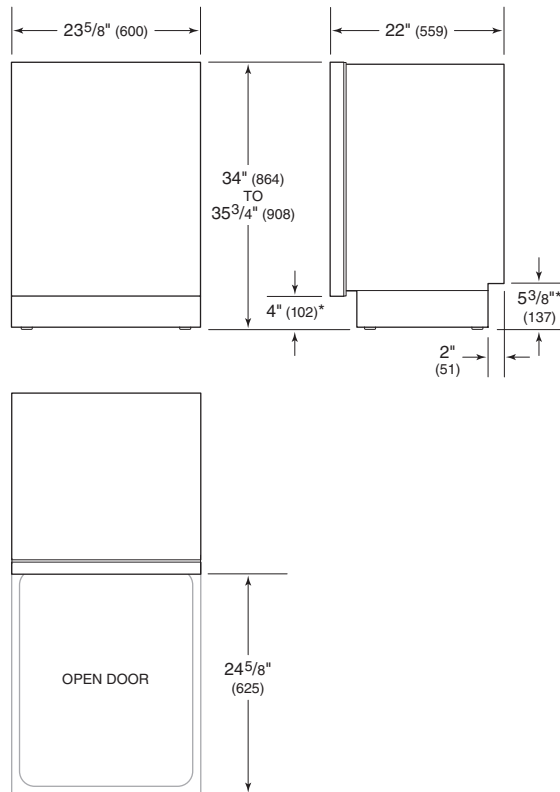
Product dimensions do not include panel and handle.  
Dimensions will vary with panel thickness.

Electrical supply, plumbing supply, and drain should be located in an adjacent cabinet. If not, they must be located within the shaded area shown in the illustrations below.

**ELECTRICAL | PLUMBING**

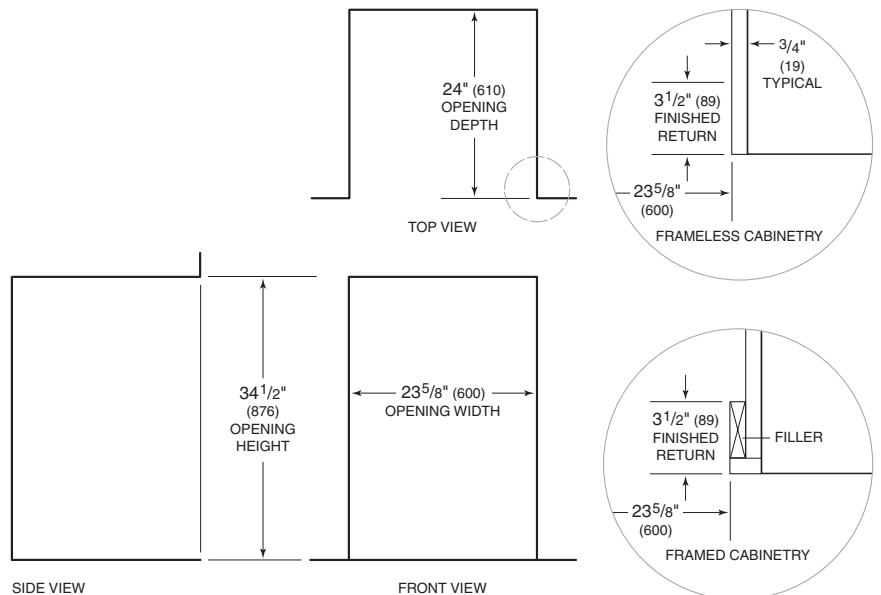


**DIMENSIONS**



\*Dimension will vary with product height.

**INSTALLATION**



NOTE: 3 1/2" (89) finished returns will be visible and should be finished to match cabinetry.