

# COMBINATION INSTALLATIONS

Document # PGCI - 003

Revised 10/30/09 Page 1/1



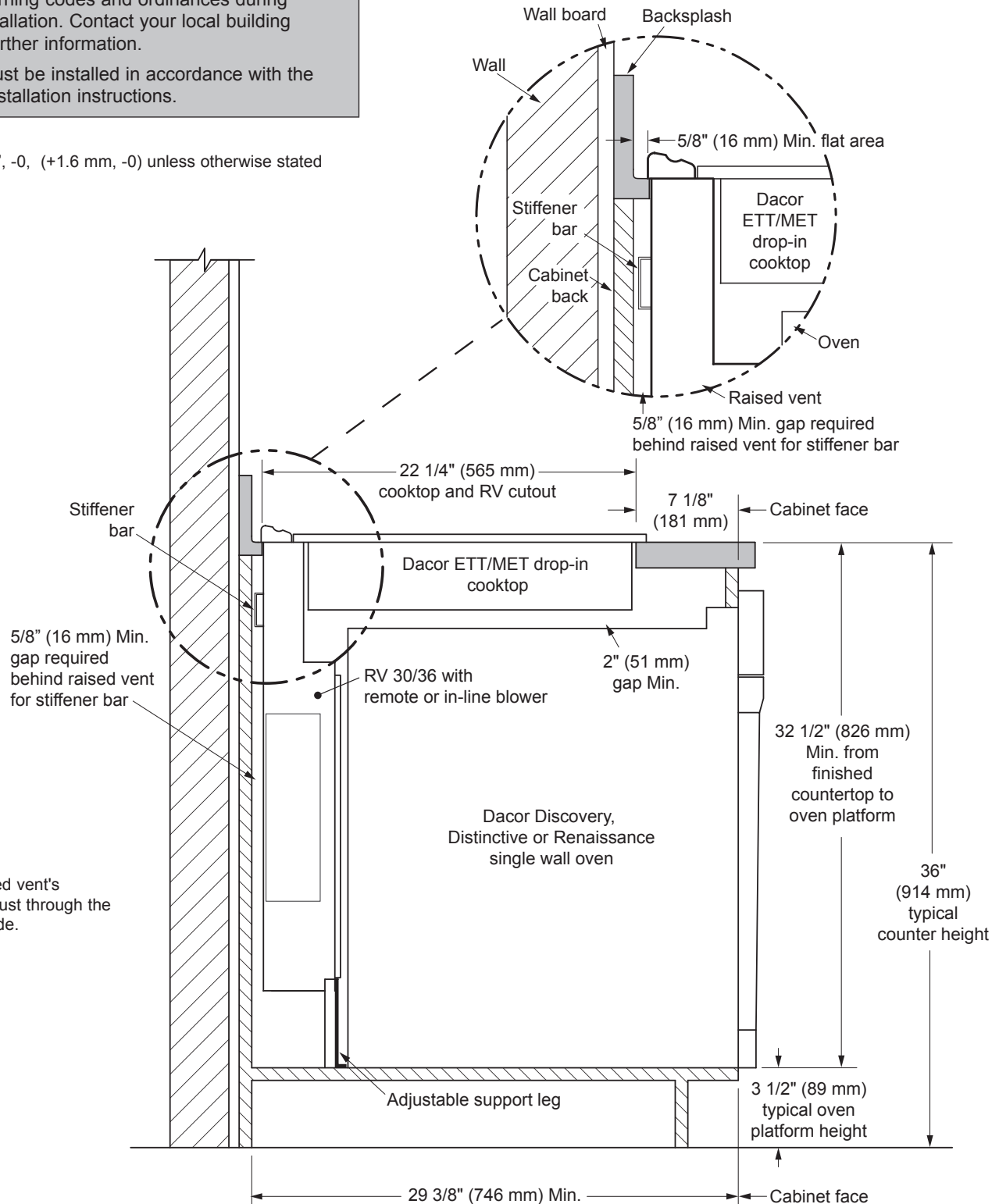
## ETT/MET Drop-In Electric Cooktop, RV Raised Vent, Single Wall Oven

## PLANNING GUIDE

### WARNING

- Observe all governing codes and ordinances during planning and installation. Contact your local building department for further information.
- All appliances must be installed in accordance with the accompanying installation instructions.

All tolerances: +1/16", -0, (+1.6 mm, -0) unless otherwise stated



Allow for the raised vent's  
3 1/4" X 10" exhaust through the  
bottom, rear or side.

**CUTAWAY SIDE VIEW**